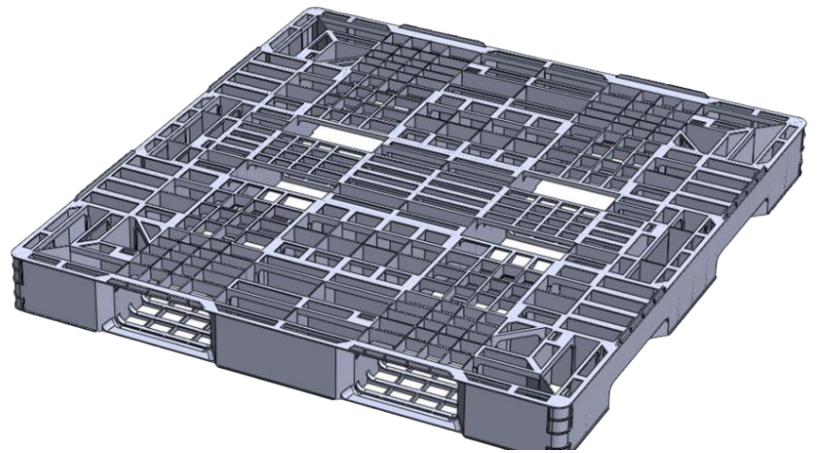
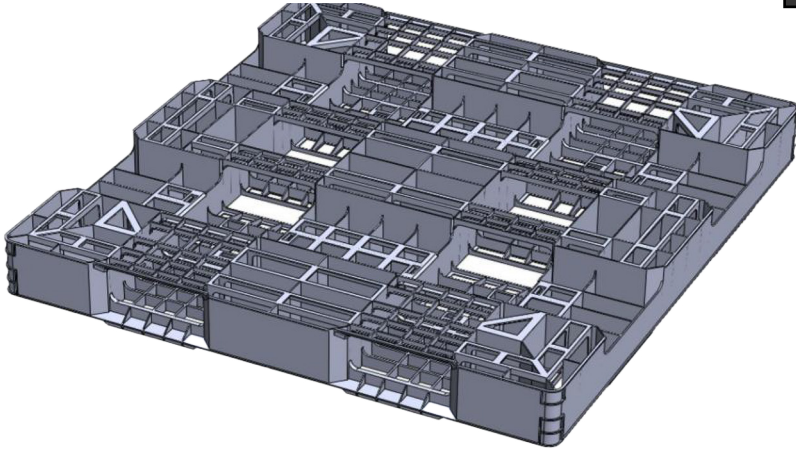




PLASTIC
PALLET PROS

RRM 4845-32

SKU: RRM S3203 48.45



SPECIFICATIONS

DIMENSIONS

Dimensions (L/ W/ H) 1,232 / 1,156 / 125 (mm) 48.5 / 45.5 / 4.9 (in)

LOGISTICS

Weight	24 (LB)
Maximum Load Dynamic	4,400 (LB)
Maximum Load Static	8,800 (LB)
Pallets Per Stack	22

53' Truckload - Quantity - 550

MATERIAL (If Applicable)

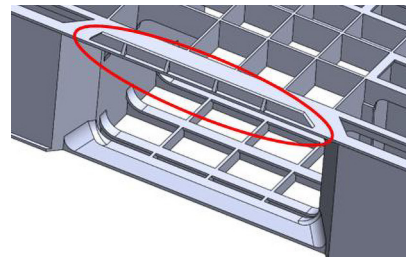
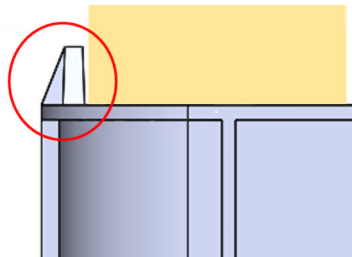
Color: Black

Material: PP (Recycled)



RRM 4845-32

SKU: RRM S3203 48.45



- Reinforced 48" dim. for spanning stacked gaylords, in Resin & Automotive Industries.
- Dimensional copy of current wood 1-way pallet used in the Resin & Automotive Ind.
- NO Weight/Tare change due to moisture!
- Ships & Stacks long-term, Bagged & Barrel
- Goods confidently for Chemical Industries.
- Tabs/Rim perfectly fits gaylord footprint used in Chemical, Resin & Automotive Ind.