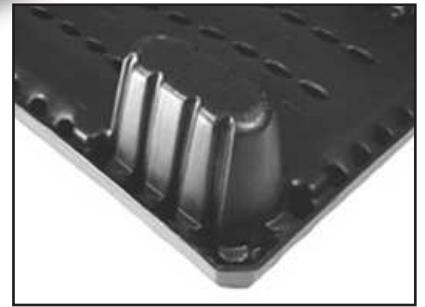




# PLASTIC PALLET PROS

## Light Weight Shipping Pallet

SKU: RRM N2403 48.40



## SPECIFICATIONS

### DIMENSIONS

Dimensions (L/ W/ H) 1,219 / 1,016 / 155.6 (mm) 48 / 40 / 6.125 (in)

### LOGISTICS

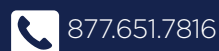
Weight	16 (LB)
Maximum Load Dynamic	2,000 (LB)
Maximum Load Static	5,000 (LB)
Racking Capacity	(LB)
Pallets Per Stack	48

**53' Truckload - Quantity - 1,440**

### MATERIAL

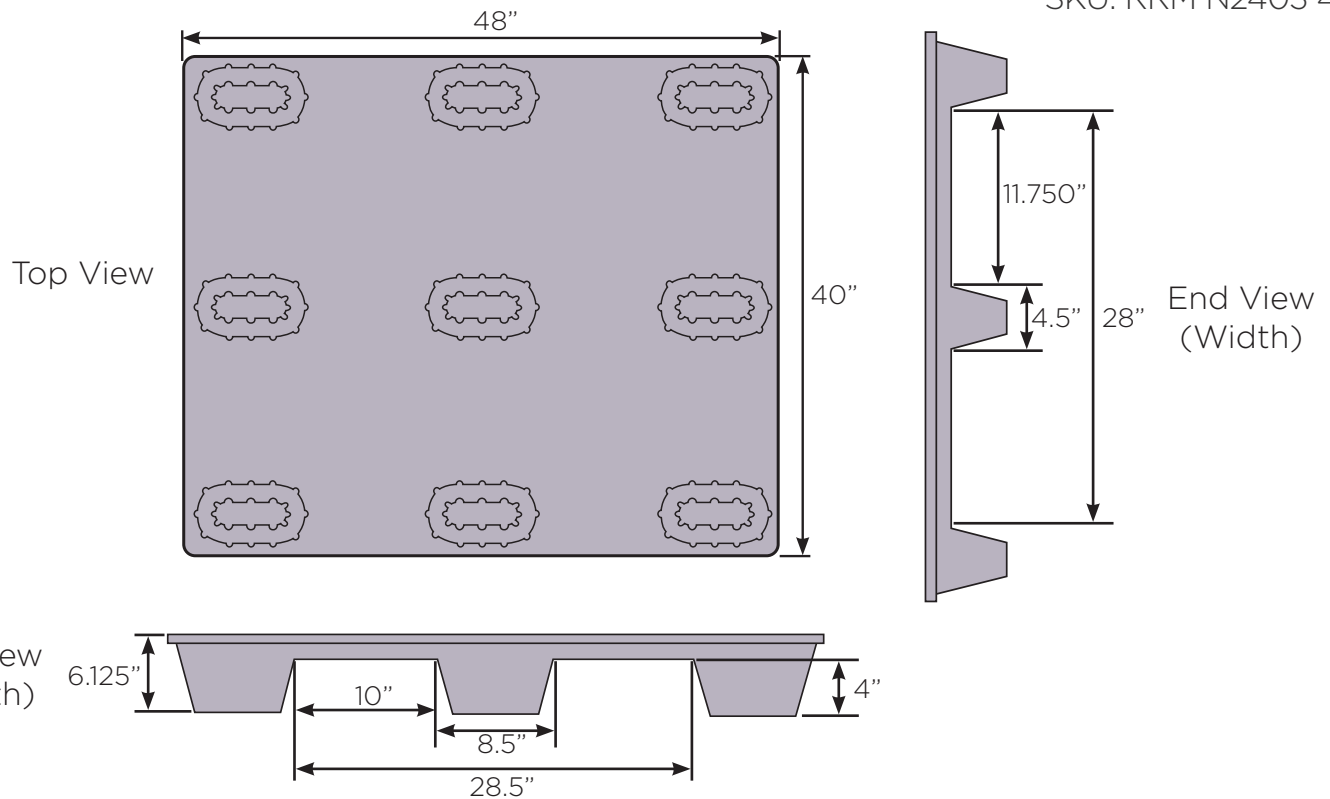
Material: HMWPE

Color: Black



# Light Weight Shipping Pallet

SKU: RRM N2403 48.40



- Four-Way fork entry for ease in handling with Fork Trucks and Pallet Jacks
- Drain holes in legs to ease in cleaning and deter any collection of liquid
- Easy to clean flat deck surface
- Conveyable
- Twin Sheet construction eliminates the need for repair and reduces product damage
- Nestable with other plastic pallets (twin sheet and injection molded pallets)
- Lightweight and extremely durable
- 100% Recyclable
- Impervious to weather - including extreme heat or cold and UV Ray protection

